

Mobile Camera Based Calculator

Liwei Wang, Jingyi Dai, Li Du

Department of Electrical Engineering, Stanford University

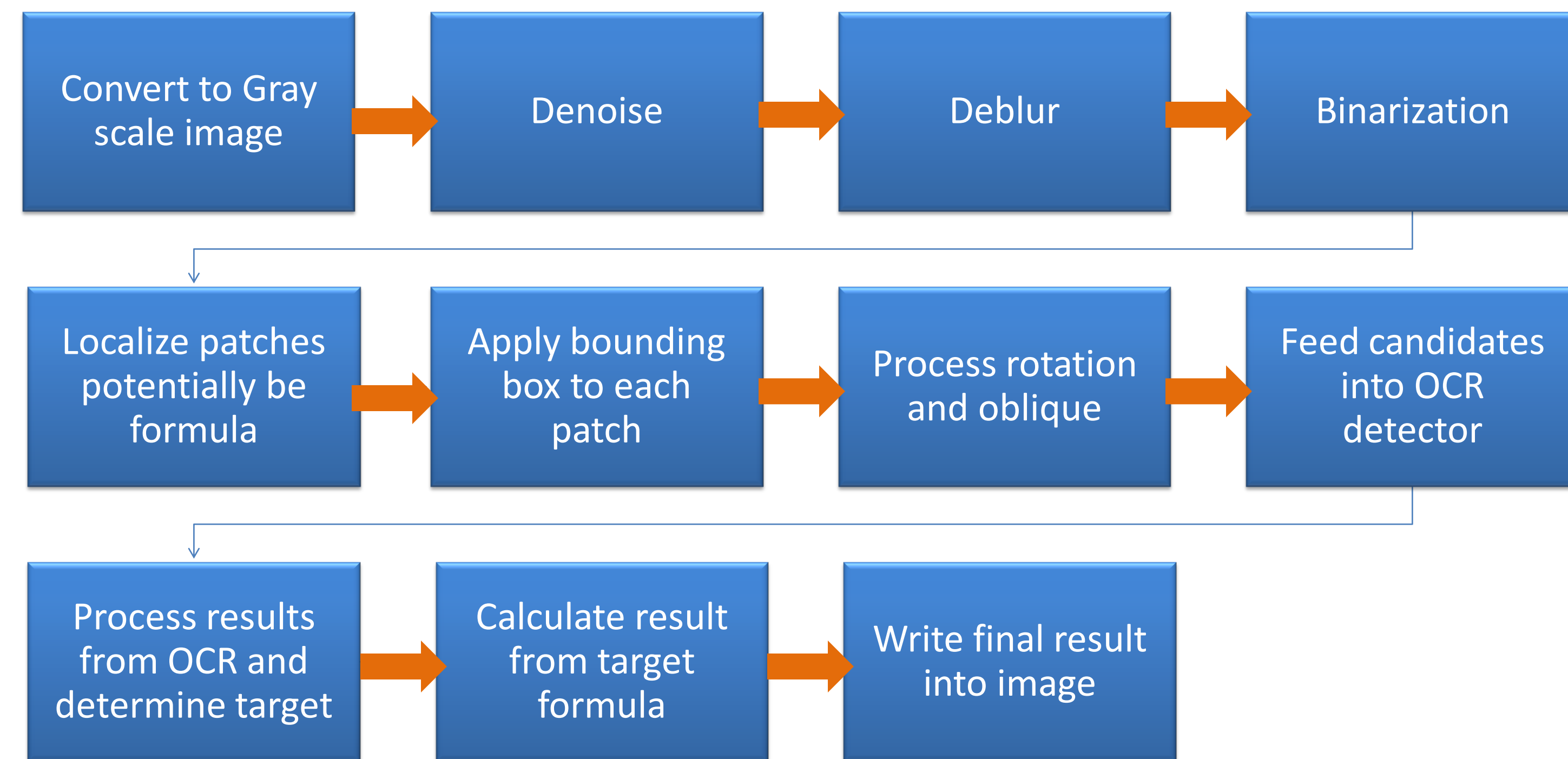
Motivation

Main applications for formula recognition:

- Recognize a formula from the background in the picture
- Get the result of the formula

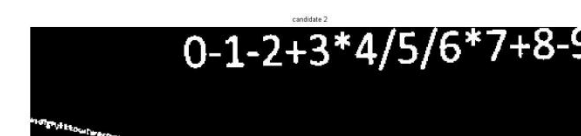
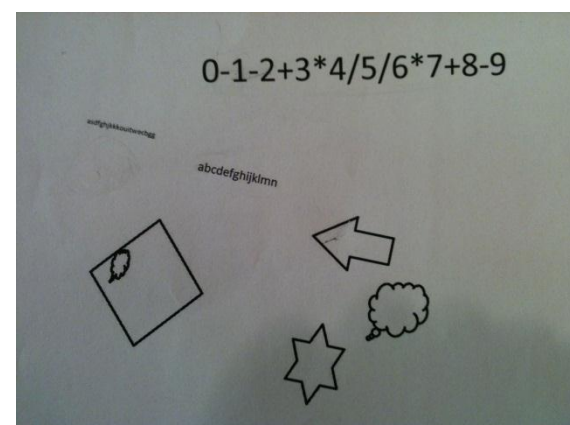
This application enables the user to do a fast calculation on mobile service.

Detection Flow



Future Improvement

- In the current edition, the size of clutter is different from the expected formula, since removing clutter is based on the region differences of clutter and formula



- The calculation speed could be improved

Experimental Results

